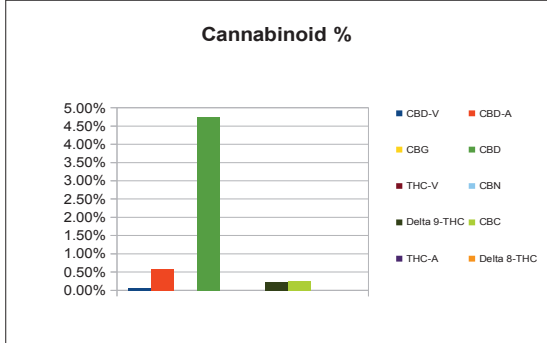
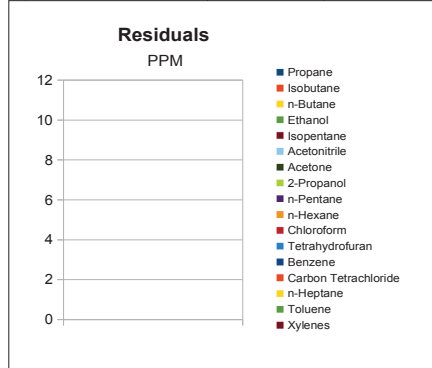


Sample Information		
Sample Identification	Full Spec 30mg Cap	
Laboratory Number	2019002837	
Batch Number	NA	
Matrix	Capsule	
Analyzed Date	02/06/19	
Extraction Date	02/06/19	
Cannabinoid (HPLC)	%	mg/g
Compound		
CBD-V	0.06%	0.62
CBD-A	0.59%	5.86
CBG	ND	ND
CBD	4.74%	47.45
THC-V	ND	ND
CBN	ND	ND
Delta 9-THC	0.23%	2.33
CBC	0.26%	2.58
THC-A	ND	ND
Delta 8-THC	ND	ND
Cannabinoids Total		
Max Active THC	0.23%	2.33
Max Active CBD	5.26%	52.61
T. Active Cannabinoids	5.30%	52.98
Total Cannabinoids	5.88%	58.84

Max Active Ratios		
	22.6 :1	CBD to THC
	0.0 :1	THC to CBD



RS (GCMS-HS) Compound	PPM	RL
Propane	NT	5.0
Isobutane	NT	5.0
n-Butane	NT	5.0
Ethanol	NT	5.0
Isopentane	NT	5.0
Acetonitrile	NT	5.0
Acetone	NT	50.0
2-Propanol	NT	5.0
n-Pentane	NT	5.0
n-Hexane	NT	5.0
Chloroform	NT	5.0
Tetrahydrofuran	NT	5.0
Benzene	NT	5.0
Carbon Tetrachloride	NT	5.0
n-Heptane	NT	5.0
Toluene	NT	5.0
Xylenes	NT	10.0



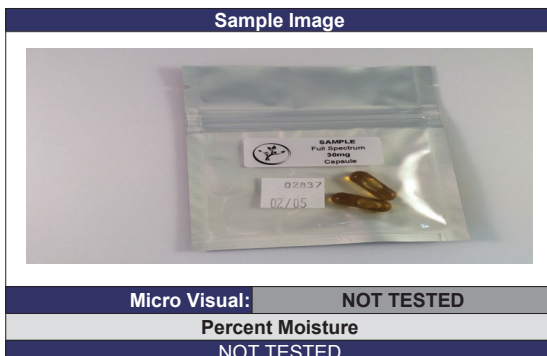
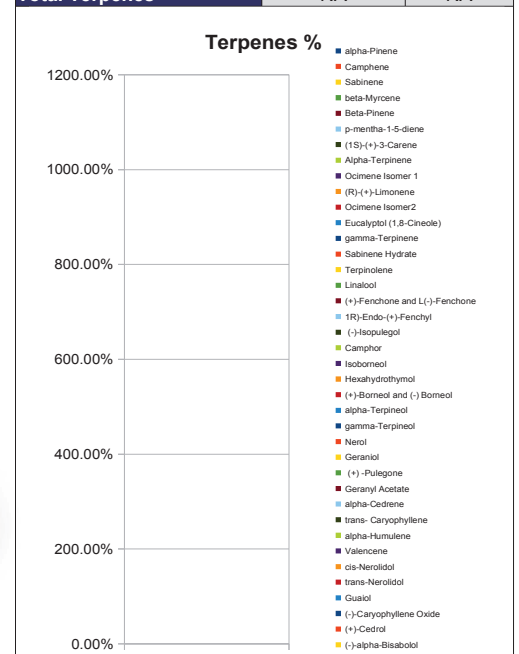
<b>g/medible</b>	<b>0.5</b>
<b>mg THC/medible</b>	<b>1.16</b>
<b>mg CBD/medible</b>	<b>23.71</b>
<b>(mg) total cannabinoids/medible</b>	<b>29.40</b>

Metals Compound	PPM	RL
Lead	NT	0.010
Arsenic	NT	0.010
Cadmium	NT	0.010
Mercury	NT	0.001

**RL=Reporting Limit**  
**NA=Not Applicable**  
**NT=Not Tested**  
**ND=Non Detected**



Terpene (GC-MS) Compound	%	mg/g
alpha-Pinene	NT	NT
Camphene	NT	NT
Sabinene	NT	NT
beta-Myrcene	NT	NT
Beta-Pinene	NT	NT
p-mentha-1-5-diene	NT	NT
(1S)-(+)-3-Carene	NT	NT
Alpha-Terpinene	NT	NT
Ocimene Isomer 1	NT	NT
(R)-(+)-Limonene	NT	NT
Ocimene Isomer2	NT	NT
Eucalyptol (1,8-Cineole)	NT	NT
gamma-Terpinene	NT	NT
Sabinene Hydrate	NT	NT
Terpinolene	NT	NT
Linalool	NT	NT
(+)-Fenchone and L(-)-Fenchone	NT	NT
1R)-Endo-(+)-Fenchyl	NT	NT
(-)-Isopulegol	NT	NT
Camphor	NT	NT
Isoborneol	NT	NT
Hexahydrothymol	NT	NT
(+)-Borneol and (-) Borneol	NT	NT
alpha-Terpineol	NT	NT
gamma-Terpineol	NT	NT
Nerol	NT	NT
Geraniol	NT	NT
(+) -Pulegone	NT	NT
Geranyl Acetate	NT	NT
alpha-Cedrene	NT	NT
trans- Caryophyllene	NT	NT
alpha-Humulene	NT	NT
Valencene	NT	NT
cis-Nerolidol	NT	NT
trans-Nerolidol	NT	NT
Guaiol	NT	NT
(-)-Caryophyllene Oxide	NT	NT
(+)-Cedrol	NT	NT
(-)-alpha-Bisabolol	NT	NT
<b>Total Terpenes</b>	<b>NA</b>	<b>NA</b>



**Chemist: JW**  
**Report Expires: 03/06/19**